

Your Alert Partner



USER MANUAL

 **ABHEDYA[®]
SURAKSHA**

ATOM - CLOUD

ATOM - CLOUD

User Manual

1.	Panel Introduction	3
2.	Panel Overview	4
3.	Initial Setup of Panel	4
4.	User Type	5
5.	Test Panel Online Connection	6
6.	Remote Control	6
	6.1 Add Remote Control	
	6.2 Delete Remote Control	
	6.3 Name Change Remote Control	
7.	Sensors	7
	7.1 Understanding of Zone Type	
	7.2 Add Sensor	
	7.3 Delete Sensor	
	7.4 Name Change of Sensor	
	7.5 Change Zone Type of Sensor	
8.	Call/SMS/Admin Numbers	10
9.	Lock/Unlock Schedule	10
10.	Password	11
11.	Lock/Exit Delay	11
12.	Alarm/Entry Delay	11
13.	Siren Length	11
14.	Notifications	11
15.	Network Strength Self-Test Time	12
16.	Factory Reset	12
17.	SMS Setting and Command Chart	13

1. Panel Introduction

1.1 System Introduction

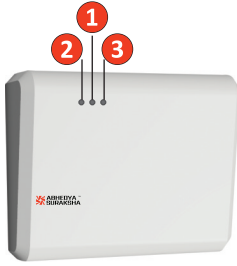
This alarm system is a high-end GSM & Internet alarm with reliable performance and excellent.

Mobile app notification, SMS message and call alert based on events. It is compatible with door sensor, motion sensor, shutter sensor, smoke sensor, gas detector and panic switch etc. It has been widely used in home, factory, school, shop villa and residential area to provide protection for valuable assets.

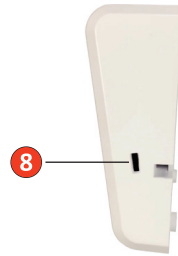
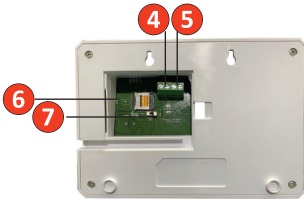
1.2 Function Introduction

- There are 20 sensors/zones, 1 wired sensor/zone and 2 remote controls supported.
- This panel supports GSM and cloud for mobile app and web browser for computer.
- Multiple sites can be handled and controlled from a single login.
- There are 4 sets of scheduled Lock/Arm-Unlock/Disarm functionality supported by day/time.
- There are 6 numbers that can be set up for Call, SMS and Admin.
- Admin numbers get SMS with selectable A/C power on/off, Lock/Unlock system, Notification of door open when system lock, Low battery of panel, Low battery of sensors, No communication with sensors.
- iOS and Android app supported.
- Cloud-based history can be seen from mobile app and computer.
- Batch process for lock/unlock can be done through cloud.
- Built-in rechargeable battery with 24 hours battery backup support.

2. Panel Overview



1. Network LED
2. Siren LED
3. Battery Charger LED
4. Siren Connector
5. Wire Sensor Connector
6. SIM Card Slot
7. Power ON / OFF Switch
8. Micro USB Charger



SIM Card installation

- Step 1. SIM card can be placed on tray
- Step 2. Flip socket and **slide** for lock

Power Adaptor

- Power adaptor should be used DC- 5v, 2 amp with Micro USB connector.

Siren Installation

- DC Siren (3v to 5v) can be directly working with panel. Siren Positive (+) and Negative (-) connection with connector of siren at Back side of Panel.
- DC Siren (12v) can be used with Relay.

3. Initial Setup of Panel

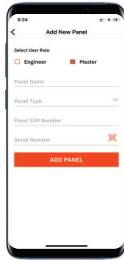
- Step 1. Insert valid SIM card in panel
- Step 2. Plug Siren in panel
- Step 3. Power On panel
- Step 4. Install and Sign-up mobile app “**Abhedya Suraksha**” from iOS and Android, Insert QR code for this.

Step 5. Add Panel

- For First time user , please select “No” on Do you have a code?



- Panel Parameters



- Panel name : Any user defined name
- Panel Type : ATOM
- Panel SIM Number :- SIM card number which inserted in panel
- Serial Number :- Panel Serial number, It can be found on box sticker with QR Code

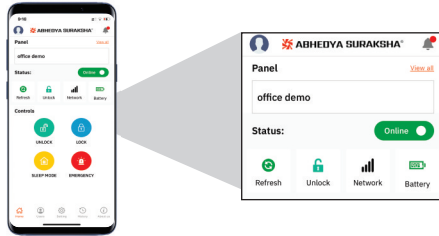
4. User Type

- Master, This user can access all functionality.
- Engineer, This user has similar access of Master except Password Change and user creations.
- User, This user has only unlock, lock, sleeping mode and emergency and status access.

Note : only Master user can add Engineer and User. First time user always be Master or Engineer.

5. Test panel online connection

- Mobile App, Main page can be turn to online when it connect to cloud.
- In case of off-line, click on Refresh button and wait till panel respond.



6. Remote Control

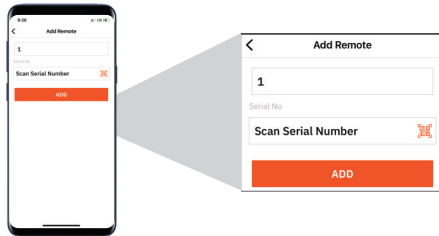
6.1 Add Remote Control

Step 1. Navigate Setting from mobile app. Setting Tab -> Sensors/Remote

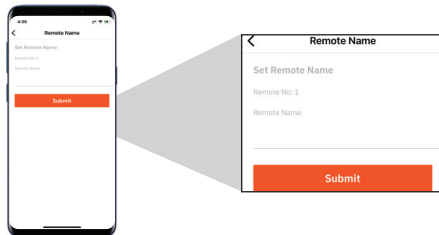
Step 2. Click Add button from Remote

Step 3. Select Remote

Step 4. Scan serial number QR Code that labeled on Remote, click Add button



Step 5. Once Remote learn, Type name of Remote, and click on Submit

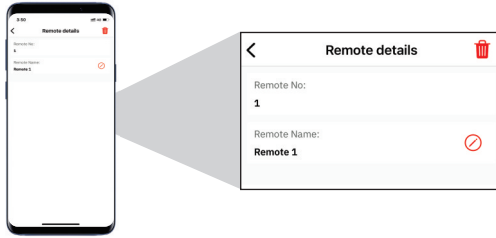


6.2 Delete Remote Control

Step 1. Navigate Setting from mobile app. Setting Tab -> Sensors/Remote

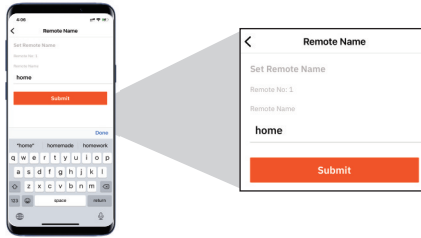
Step 2. Click on Remote for delete

- Step 3. Press delete icon from top right
- Step 4. Confirmation



6.3 Edit Remote Control Name

- Step 1. Navigate Setting from mobile app. Setting Tab -> Sensors/Remote
- Step 2. Click on Remote for edit
- Step 3. From Remote Name click edit button
- Step 4. Change Name and Click on update



7. Sensors

7.1 Understanding of Zone Type

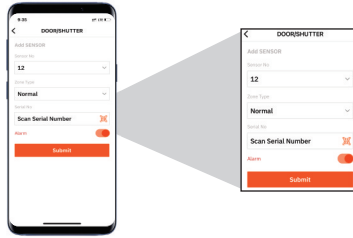
Zone type is behavioural application of sensors. Same sensor can be used with different requirement. User can select main six zone type. All six zones can be configured with siren on and off options.

Note : Zone Types details can be found at Table on 7.5 (page-9).

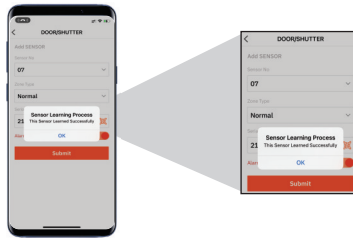
7.2 Add Sensor

- Step 1. Navigate Setting from mobile app. Setting Tab -> Sensors/Remote
- Step 2. Select Tab “Sensor”
- Step 3. Click on Type of sensor
- Step 4. Click Add button
- Step 5. Select Sensor zone number, Type of zone and selection of siren enable or disable, click Add button

Step 6. Scan QR Code label on Sensor



Step 7: Once Remote learn, Type Sensor name and Click submit.



7.3 Delete Sensor

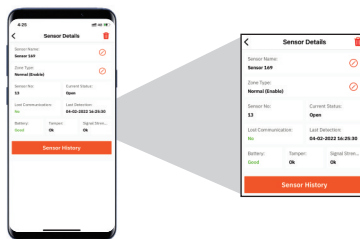
Step 1. Navigate Setting from mobile app. Setting Tab -> Sensors/Remote

Step 2. Select Tab “Sensor”

Step 3. Select Type of sensor

Step 4. Click on sensor you wish to delete

Step 5. Press delete icon from top right



Step 6. Confirmation

7.4 Name change of sensor

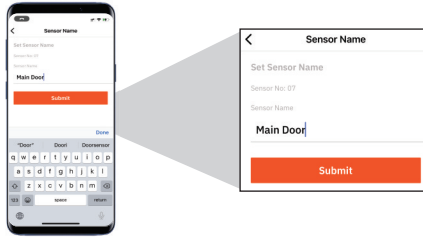
Step 1. Navigate Setting from mobile app. Setting Tab -> Sensors/Remote

Step 2. Select Tab “Sensor”

Step 3. Select Type of sensor

Step 4. Click on sensor you wish to change a name

Step 5. Click on edit button from Sensor Name



Step 6. Type new name and click on Submit.

7.5 Change zone type of sensor

Step 1. Navigate Setting from mobile app. Setting Tab -> Sensors/Remote

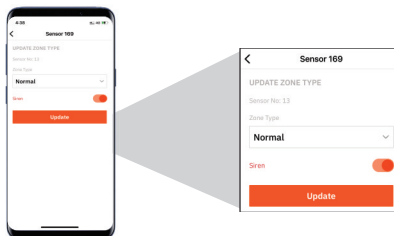
Step 2. Select Tab “Sensor”

Step 3. Select Type of sensor

Panel →	Unlock	Lock	Sleeping Mode
Sensor Type ↓			
Normal	-	Alert	Alert
Sleeping Mode	-	Alert	-
Emergency	Alert	Alert	Alert
Close	-	-	-
Admin	SMS to Admin	Alert	Alert
Welcome	Siren Beep	Alert	Alert

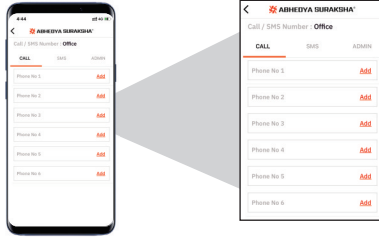
Step 4. Click on sensor you wish to change a zone type

Step 5. Click on edit button from Zone Type



Step 6. Select new zone type and Siren on/off and click on update

8. Call/SMS/Admin Number



Call Numbers:

- There are six Call numbers could be stored for panel to dial on alert.
- Panel dial one by one to call numbers, panel dial these numbers directly from GSM.

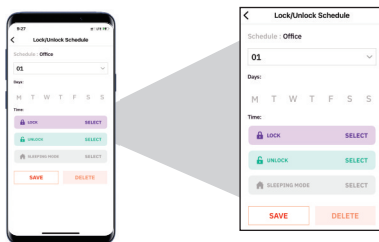
SMS Numbers

- There are six SMS numbers could be stored for panel to SMS on alert.
- SMS has description of name stored in panel
- SMS numbers can be helpful for Control by Registered Number.

Admin Numbers

- There are six SMS numbers could be stored for Administration and various activity
- Panel A/C power alert, Lock/Unlock notification, Low Battery of Panel, Sensor Low Battery, Sensor lost communication, Alert on door open when panel get lock notification gets on Admin numbers
- All these notification can be selectable from Settings -> More Settings -> Notifications

9. Lock/Unlock Schedule



- Lock/Unlock schedule is Auto Timer for lock and unlock of panel.

- There are four set of timer schedule can be set
- Timer can be set based on selected days and given time for lock and unlock.

10. Password

This password field is for SMS password of panel. When internet connectivity is down for some reason it automatically switch to SMS. SMS command need unique password. User can change password anytime, it can be four digit number. Default password is 1234.

11. Lock/Exit Delay

- Lock delay is delay that panel get locked. Delay can be set in seconds and default delay is 0 seconds.
- System will wait of set delay when it get lock. Maximum delay is 99 seconds.

12. Alarm/Entry Delay

- Alarm delay is delay that panel get start alarming when any sensor get activated. This delay provide time to user to get in any unlock panel.
- Delay can be set in seconds and default delay is 0 seconds. Maximum delay is 99 seconds.

13. Siren Length

Siren length is siren up time during alarm. Siren length can be set in minute and default delay is 02 minute. Maximum length is 20 minutes

14. Notifications

14.1 A/C Power Alert

Panel send SMS or Internet notification when main AC power supply get off or any problem with charger. Admin numbers get SMS of A/C power alert

14.2 Lock/Unlock Notification

Panel send SMS or Internet notification each time panel gets lock and unlock. Admin numbers get SMS of Lock/Unlock alert. Notification or SMS has details of source of lock and unlock of system.

14.3 Low Battery of Panel

Panel send SMS or Internet notification when panel battery get low. Admin numbers get SMS of Low battery of panel.

14.4 Low Battery of Sensors

Panel send SMS or Internet notification when any sensor battery gets low. Admin numbers get SMS of Low battery of sensor.

14.5 Sensor Lost - No Communication

Panel and sensor has regular communication even sensor is passive. If there is any reason and communication get break it will send lost sensor notification. Admin numbers get SMS of Sensor Lost - No communication.

14.6 Sensor Tamper

Every sensor has tamper switch, there is tamper can be disable for sensors. System will ignore tamper alert.

14.7 Control By Registered Number

SMS command can be control by registered numbers. If this settings enables then only numbers that stored as SMS alert in the panel, They can operate with SMS.

14.8 Conventional Lock/Arm

This functionality is mainly door and shutter sensors. If this settings enables then system get locked only when all doors or shutters closed. Admin numbers get SMS with details of all open doors and shutters.

14.9 Sensors Activation Alert

This is only web functionality. User gets notification on each time when any sensor get activated, open or close.

15. Network Strength Self-Test Time

Network strength self-test time is auto test of SIM card network based on settings.

16. Factory Reset

Factory reset is factory default. It will load default settings and removed all paired sensors.

16. SMS Setting and Command Chart

In addition to set parameter through host menu, SMS or Feticion Message can also set host parameters. The form is as below: (System Password) + (Command Number) + parameter 1+parameter 2+parameter 3+parameter 4. All commands begins with system password, and 1234 is

	Name	Com mand	Para. 1	Para. 2	Para. 3	E n d	Example
							1234 is initial password
1	Unlock	0				#	12340# Unlock/Disarm
2	Lock	1				#	12341# Lock/Arm
3	Sleep Mode	2				#	12342# Sleep Mode/Home Arm
4	Emergency Siren	6				#	12346# Emergency Siren
5	Check Status	11				#	123411# Status check if it is Lock/Unlock. GSM Network Strength
6	Log/History	5				#	12345# Last 20 Data Log
7	Set Call/Alarm Number	3	1 to 6	9898989898		#	1234319898989898# Set 9898989898 phone number to position 1.
8	Delete Call/Alarm Number	3	1 to 6			#	123431# Delete phone number of position 1.
9	Check Call/Alarm Number	30				#	123430# Check all phone number saved from position 1 to 6.
10	Set SMS Number	4	1 to 6	9898989898		#	1234429898989898# Set 9898989898 SMS number to position 2.
11	Delete SMS Number	4	1 to 6			#	123432# Delete SMS number of position 2.
12	Check SMS Number	40				#	123440# Check all phone number saved from position 1 to 6.
13	Set Admin Number	8	1 to 6	9898989898		#	1234849898989898# Set 9898989898 Admin number to position 4.
14	Delete Admin Number	8	1 to 6			#	123484# Delete Admin number of position 4.
15	Change System Password	50	New Password, 4 digit			#	1234504321# Set new password to 4321
16	Set Lock/Arm Delay -Exit Delay	51	00 to 99 Sec			#	12345120# Set Lock/Arm delay to 20 Second
17	Set Alarm Delay -Entry Delay	52	00 to 99 Sec			#	12345220# Set Alarm delay to 20 Second

18	Set Siren Length	53	00 to 99 min			#	12345205# Set Siren length time to 5 minute
19	Check System Time	56				#	123456# Check current time of system
20	Set Auto Time Lock/Unlock	57	01 to 04	Lock Time XX – Hours YY - Min	Unlock Time XX – Hours YY - Min	Days 1 to 7	# 12345701203006451234567# Set Scheduler of set 1 , Lock on 8.30 pm and Unlock on 6.45 am On Mon, Tus, Wed, Thru, Fri , Satand Sun
21	Check Auto Time Lock/Unlock	57	01 to 04			#	12345701# Check auto time set on group 1
22	Add Remote	71	1 to 2	5		#	12347115# Pair remote to Remote zone 1
23	Name of Remote	71	1 to 2	0		#	12347110 Primary# " Primary " name given to Remote zone 1
24	Delete Remote	71	1 to 2			#	1234711# Delete Remote 1
25	Read Remote Name	71	1 to 2	0		#	12347110# Check what name given to Remote zone 1
26	Add Sensor	72	01 to 20 (Sensor No)	01 to 12 (Zone Type)	Zone Type 01-Normal, 02- Sleeping M 03- Emergency 04- Close 05- Admin 06- Welcome 07- Normal, 08- Sleeping M 09- Emergency 10- Close 11- Admin 12- Welcome	Siren On On On On On Off Off Off Off Off Off	4 12347202014# Pair Sensor to Sensor zone 2 with Normal zone and siren on
27	Name of Sensor	72	01 to 20	00	Xyz	#	1234720100Main Door# " Main Door " name given to Sensor zone 1
28	Delete Sensor	72	01 to 20			#	12347201# Delete Sensor 1
29	Read Sensor Name	72	01 to 20	00		#	1234720100# Check what name given to Sensor zone 1
30	Change Sensor Zone	72	01 to 20 (Sensor No)	01 to 12 (Zone Type)		#	1234720202# Change sensor zone type to sleeping mode of sensor 2
31	Check Sensor Zone	72	01 to 20	99		#	1234720299# Check sensor zone type to sensor 2
32	Set Wire Sensor Zone	72	99	01 to 12 (Zone Type)		#	1234729903# Set wire zone as Emergency with Siren on

33	Check Wire Sensor Zone	72	99			#	12347299# Check wire zone type
34	Conventional Lock/Arm	70	0 – Disable functionality 1 – Enable functionality			#	1234701# Enable conventional lock functionality
35	Sensor Low Battery	73	0 – Disable functionality 1 – Enable functionality			#	1234730# Disable Sensor low battery functionality
36	Communication Alert between Sensor and Panel	74	0 – Disable functionality 1 – Enable functionality			#	1234741# Enable Alert between Sensor and Panel functionality
37	Lock/Unlock Notification	75	0 – Disable functionality 1 – Enable functionality			#	1234750# Disable Alert on Panel lock and Unlock functionality
38	Power On/Off Notification	76	0 – Disable functionality 1 – Enable functionality			#	1234761# Enable Alert when Panel disconnect with main A/C power
39	Panel Low Battery Notification	77	0 – Disable functionality 1 – Enable functionality			#	1234770# Disable Alert on Panel low battery.
40	Control By Registered User	78	0 – Disable functionality 1 – Enable functionality			#	1234781# Unknown user could not operate or control SMS command
41	Tamper Alert	79	0 – Disable functionality 1 – Enable functionality			#	1234740# Disable Alert on any Tamper of Sensor and Panel.
42	Check Firmware Version	9				#	12349# Get Version details of Firmware
43	Set Network Self-Test Time	94	Lock Time XX – Hours YY - Minute	Days 1234567		#	123494235015# Get GSM network strength on every Monday and Friday at 11.50 PM
44	Restore Factory Settings	9898				#	12349898# Reset Panel

System's initial password. Users can change system password and since then, users should use the modified password, or host will not response to the commands.